

THE SUSTAINABLE LANDSCAPES PARTNERSHIP



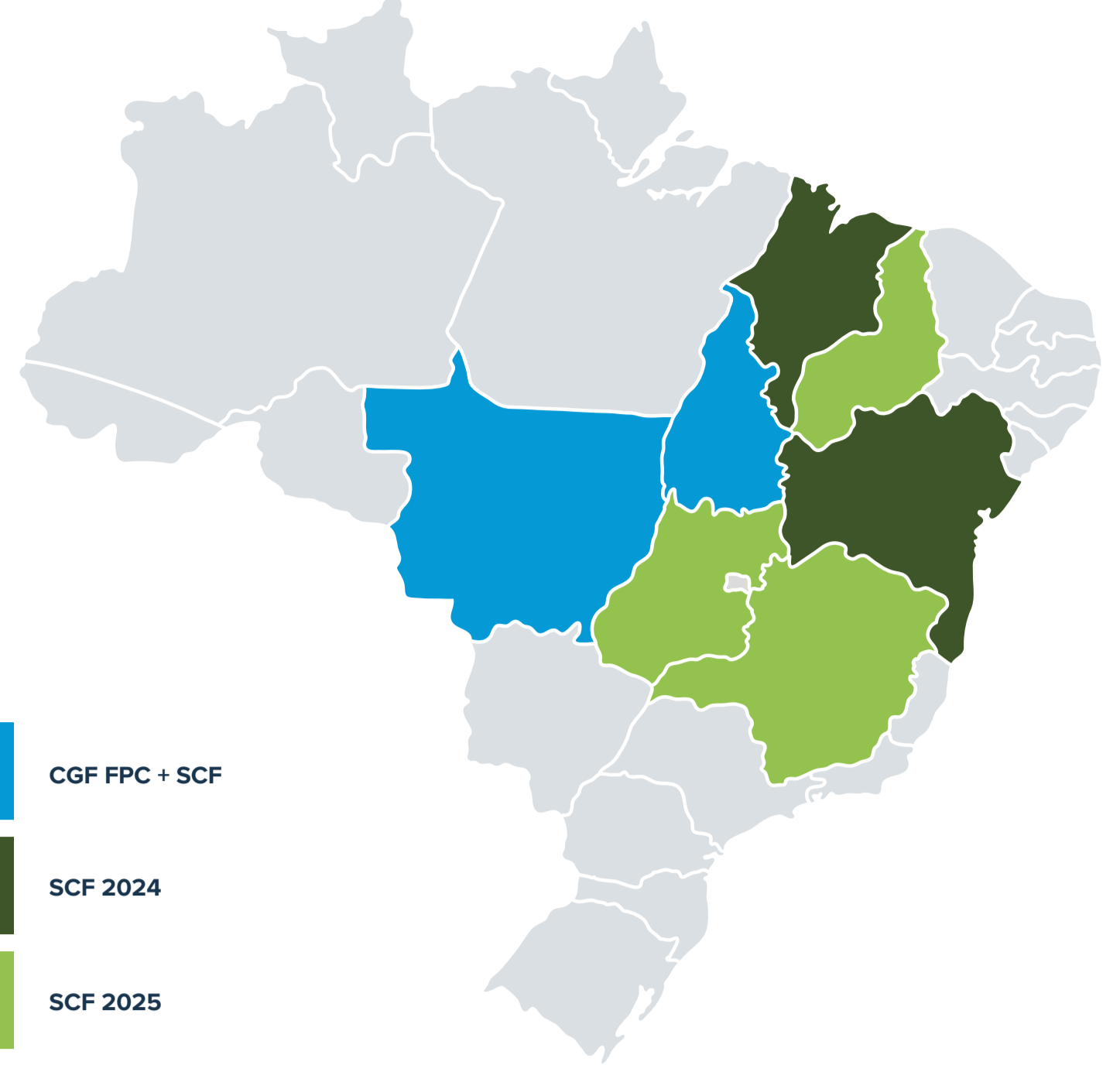
A joint initiative of the CGF Forest Positive Coalition and World Business Council for Sustainable Development's Soft Commodities Forum



The World Business Council for Sustainable Development's (WBCSD) Soft Commodities Forum (SCF) and the Forest Positive Coalition of the Consumer Goods Forum (CGF) are inviting key stakeholders to join them in addressing commodity-driven ecosystem conversion in Brazil's Cerrado biome.

Implementing deforestation- and conversion-free (DCF) supply chain practices is a significant effort from the sector, but other incentives are needed to build a forest positive future. To create these incentives, both platforms embarked on a collaboration in 2020 to drive investment in transitioning priority commodity-producing landscapes to forest positive resilient sourcing areas.

OUR IMPACT



OUR VISION

The CGF and SCF believe that successful, effective landscape initiatives in Brazil are essential for advancing regenerative and resilient production regions with positive outcomes for people, nature, climate, and business.

To support this vision, FPC and SCF companies will intensify collaboration in priority Cerrado landscapes by:



A PROOF OF CONCEPT IN WESTERN MATO GROSSO

To demonstrate the effectiveness of its model in achieving forest-positive and resilient landscapes, the CGF-SCF partnership has selected Western Mato Grosso (one of the four regions from graphic above) to showcase the tangible benefits that its approach can deliver for people, nature and climate.

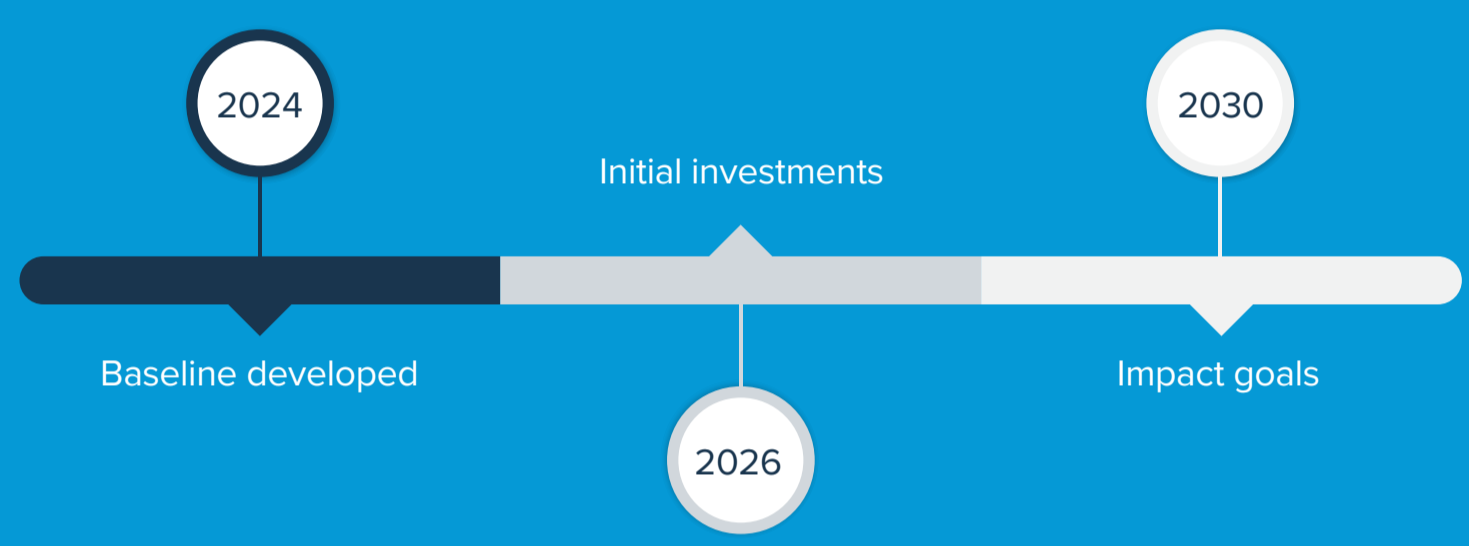
In 6 municipalities in Western Mato Grosso, the partnership consists of:



With initial investments in Western Mato Grosso running until June 2026, the initiative has achieved concrete results in farmer engagement, conservation, restoration and DCF and sustainable soy production.

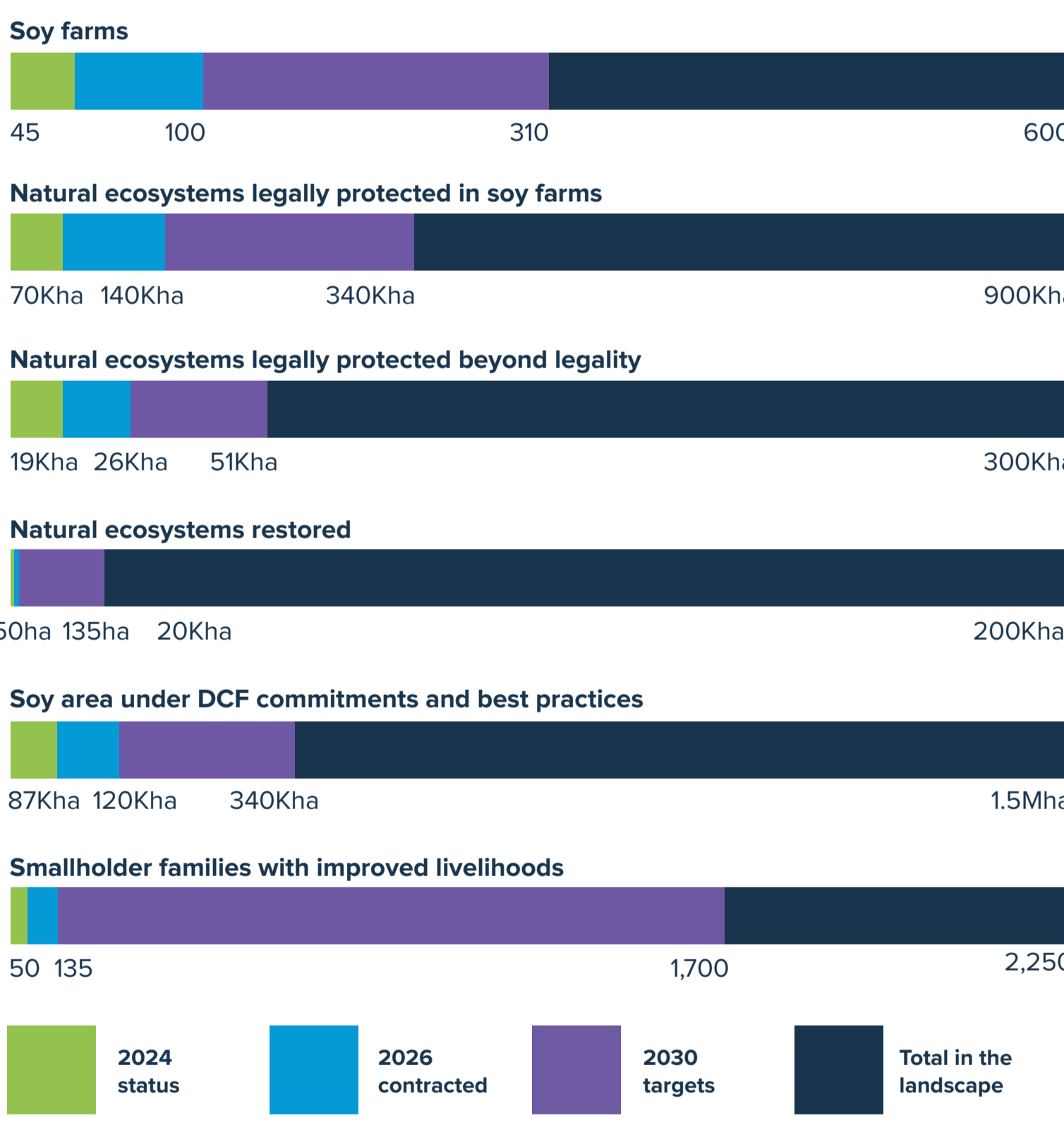
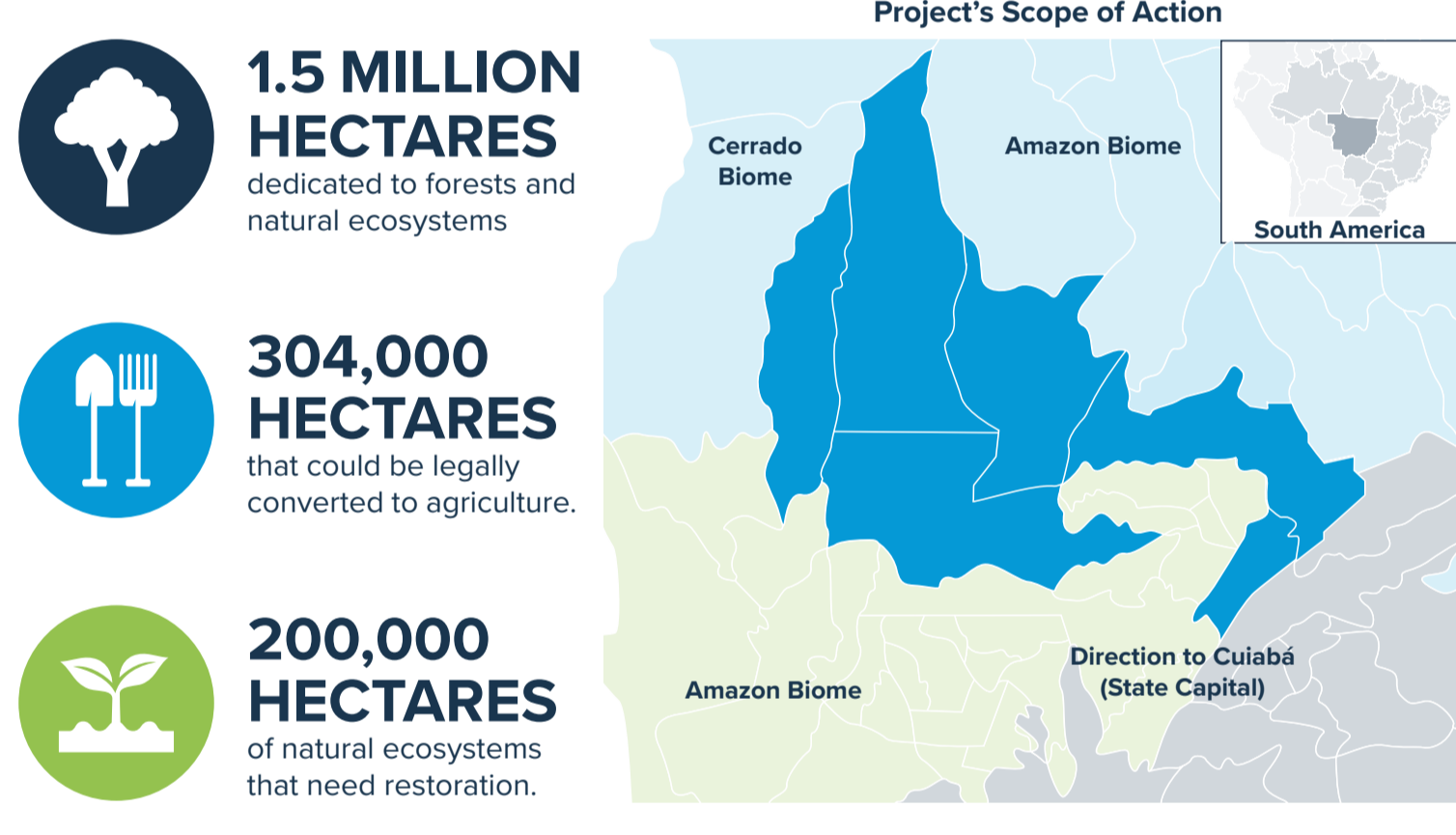
Beyond farm-support, the initiative also promotes smallholders' livelihoods through restoration and supports the development of governance that empowers local stakeholders to develop, implement and monitor common goals, social safeguards and a long-term strategy for the initiative's financial self-sufficiency.

Western Mato Grosso initiative is run by a consortium composed by IPAM, PCI Institute, Producing Right and Proforest, which has developed a baseline for the entire landscape and created 2030 impact goals.



WESTERN MATO GROSSO

Landscape comprises 6 municipalities in an area of 5 million hectares, of which 1.5 million is covered with forests and natural ecosystems. While 304,000 hectares could be legally converted to agriculture, more than 200,000 hectares of natural ecosystems need restoration.



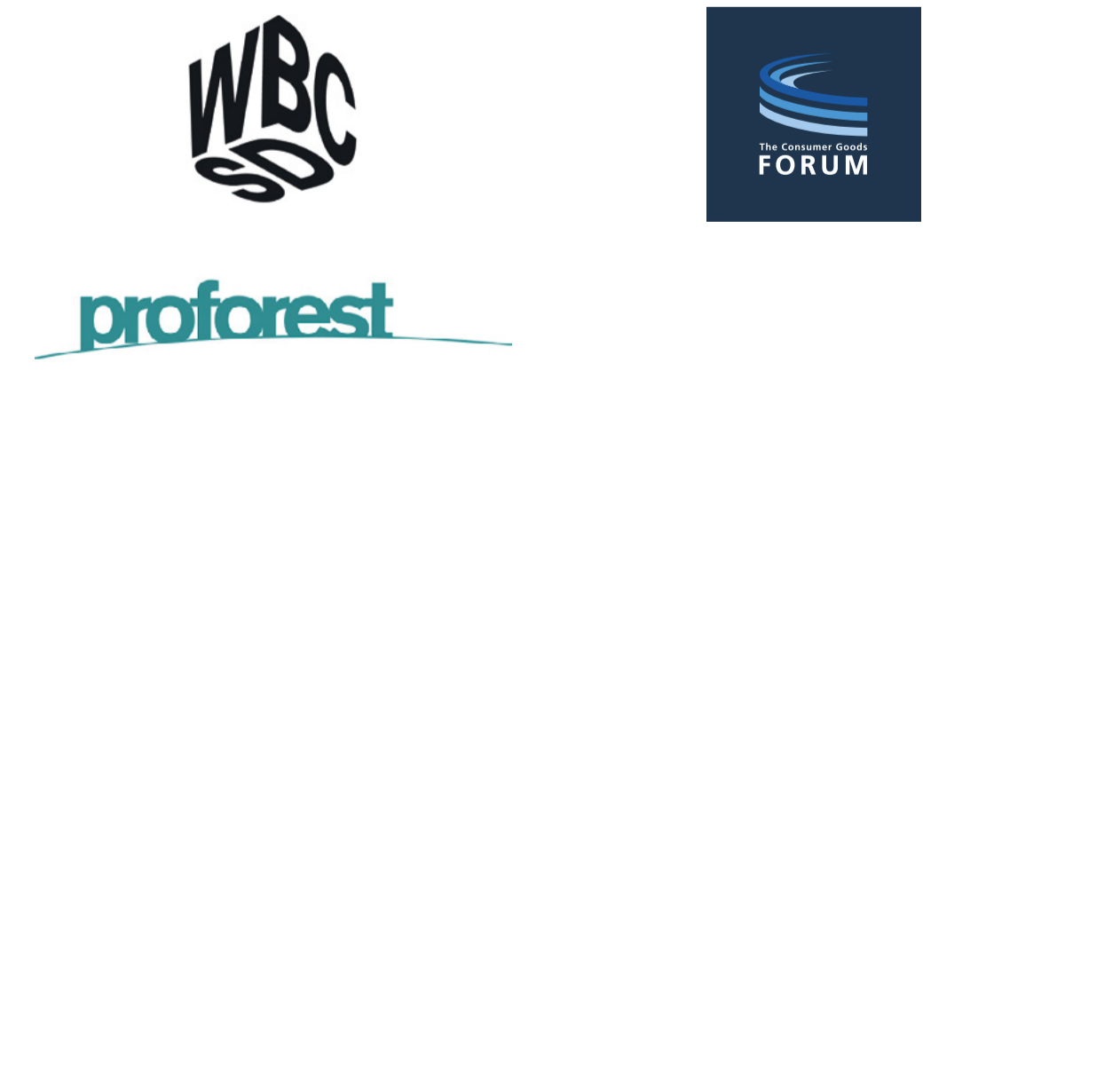
To transition the Cerrado's key landscapes to a forest-positive future, the Partnership is inviting further support and participation from key stakeholders, including:



Achieving our **2030 targets** requires further investment, providing an opportunity to support initiatives with a strong potential to deliver tangible impact and serve as a model for other jurisdictions on how to strike a balance between production, conservation and social inclusion.

JOIN US BY CO-INVESTING AND SUPPORTING OUR LONG-TERM VISION FOR THE BRAZILIAN CERRADO!

Secretariat



Soft Commodities Forum and CGF Forest Positive Coalition



Global Partners and Advisors



SCF and FPC implementing partners in Cerrado biome

